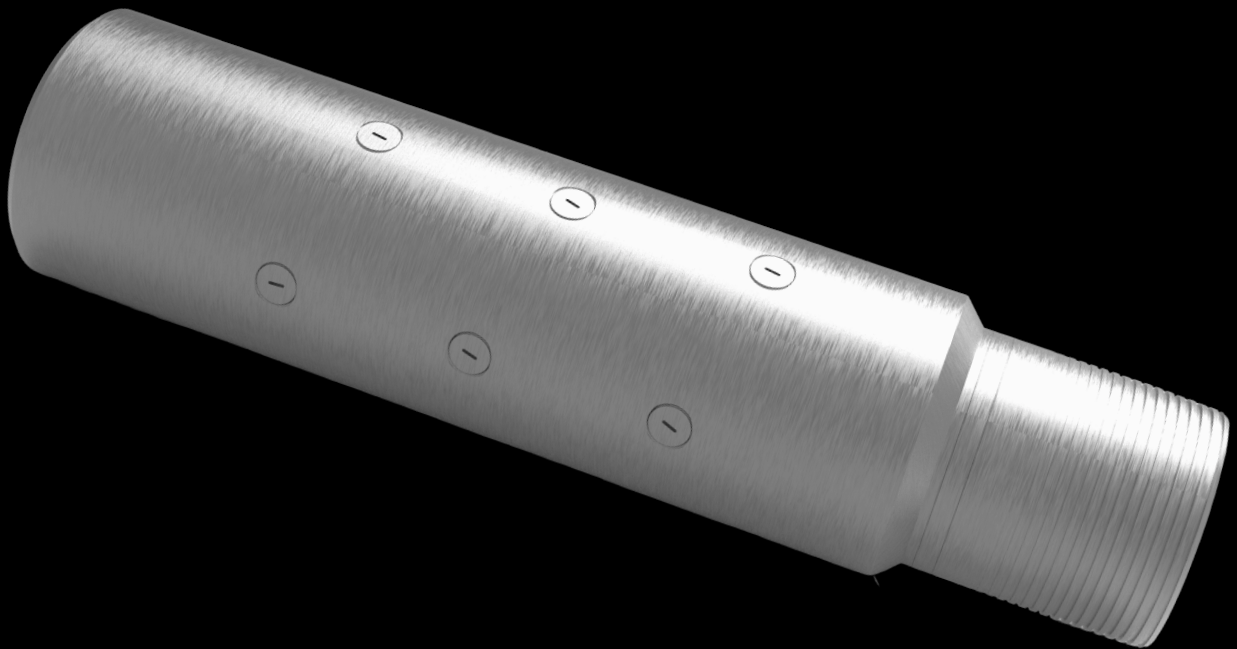


Dissolvable Toe Initiator

NEXSTEP

Let it flow.



NEXGEN

| why us |

The NeXstep Dissolvable Toe Initiator (NeXstep DTI) provides the most **reliable** and **cost-effective** method for testing casing, initiating the fracturing process, and increasing production potential from the first stage. Injection is established through **Dissolvable Port Plugs** and can be set up to mimic any perforation design. With a slim OD and full bore ID NeXstep subs are ran just like casing, compatible with every cement system, and offer full casing test abilities if needed.

differentiators

REPLICATE PERF CLUSTERS

Install multiple NexStep DTIs to replicate perf clusters and serve as the first stimulation stage.

NO MOVING PARTS

Every port opens and prevents plug-off that's typically associated with standard toe sleeves.

STREAMLINE CASING TESTS

NexStep subs can be tested immediately after bumping plug without any time, or cycle limitations.

specs

Sleeve Size (in.)	4.5	5.0	5.5	6.0
OD (in)	5.40	5.8	6.15	7.0
ID (in.)	3.75	4.0	4.5	5.0
Length (in)	22	22	22	22
Flow Port Area (in ²)*	6.6	6.6	6.6	6.6
Max. Differential Pressure	10,000	10,000	10,000	10,000
Max. Temperature (F)	400	400	400	400

*Custom flow area and casing sizes available

**Ball seat available for all sizes



NEXGEN